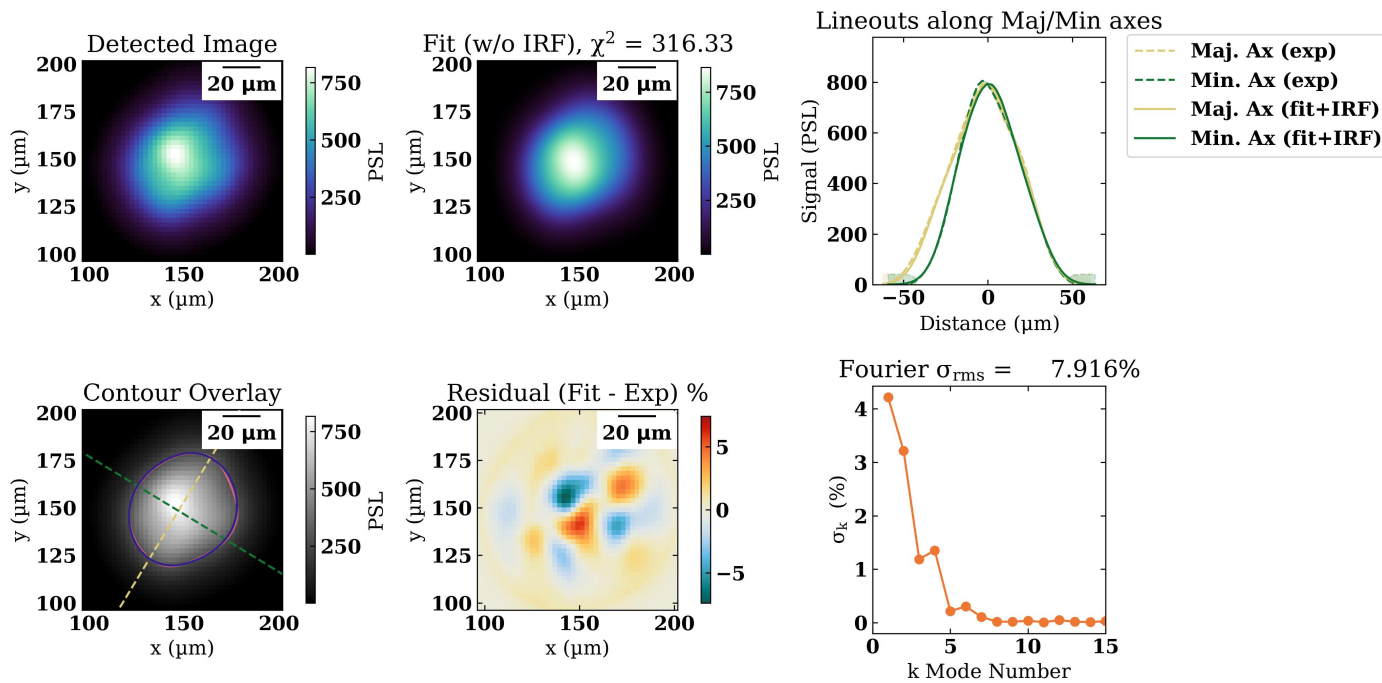


Results

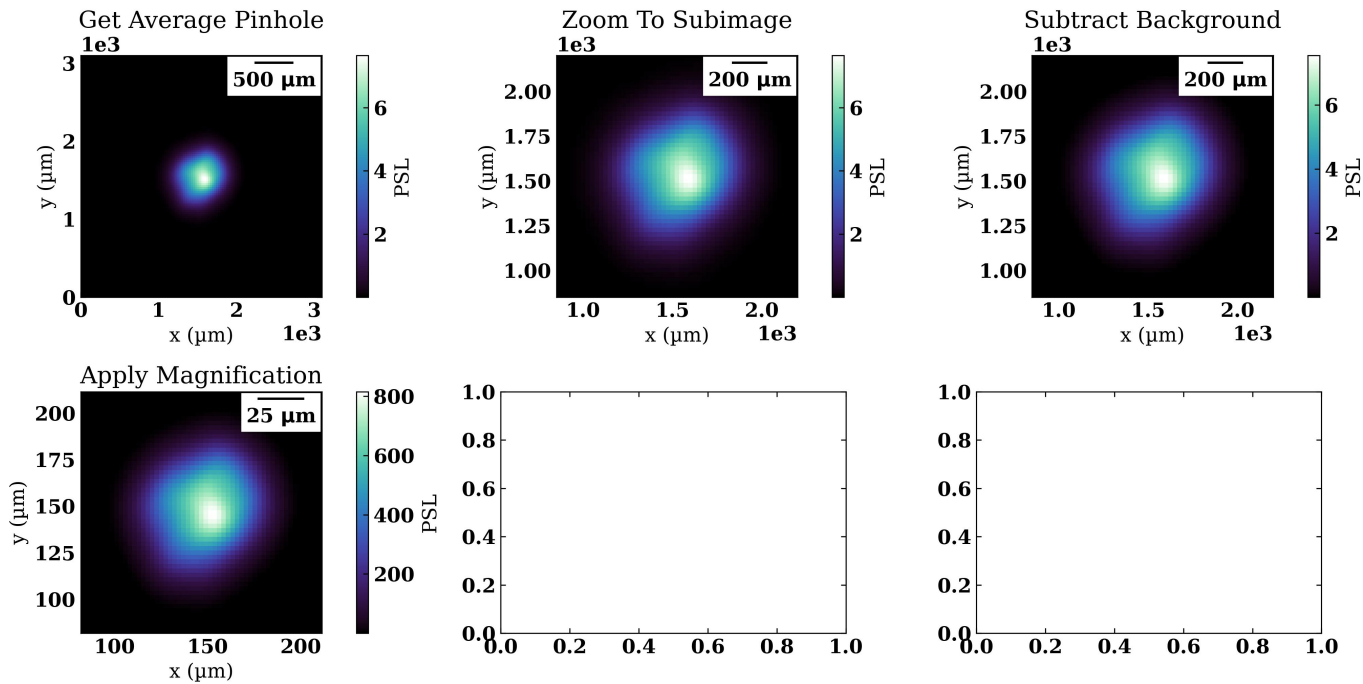
Parameter	Channel 1
Fit Metric	316
Amplitude	863 ± 0.149 PSL
Axial Ratio	1.21 ± 0.00023
Core Offset	2.52 ± 0.0169
L1 Angle	0.27 ± 0.00216
L2 Angle	-2.12 ± 0.00023 rad
Major Axis	29.8 ± 0.00461 μm
Minor Axis	24.7 ± 0.00382 μm
Photon Yield	1.29e+04 ± 26.6 J
R0	27.1 ± 0.003 μm
R17	34.2 ± 0.00291 μm
Supergaussian Exponent	2.03 ± 0.000554
X Center	147 ± 0.0172 μm
Y Center	148 ± 5.68e-14 μm

TRXI IP 1 SG Fit

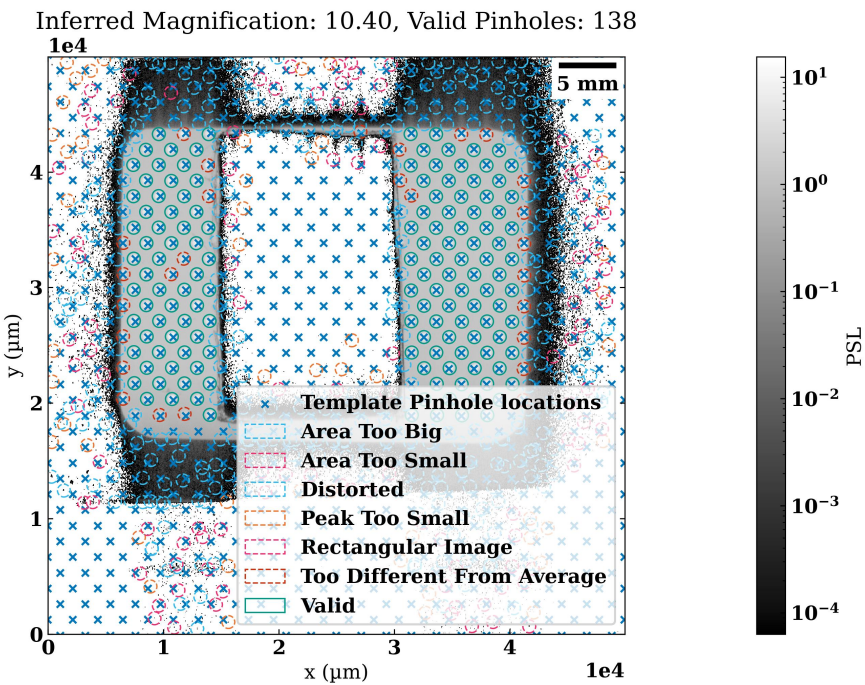


TRXI IP 1

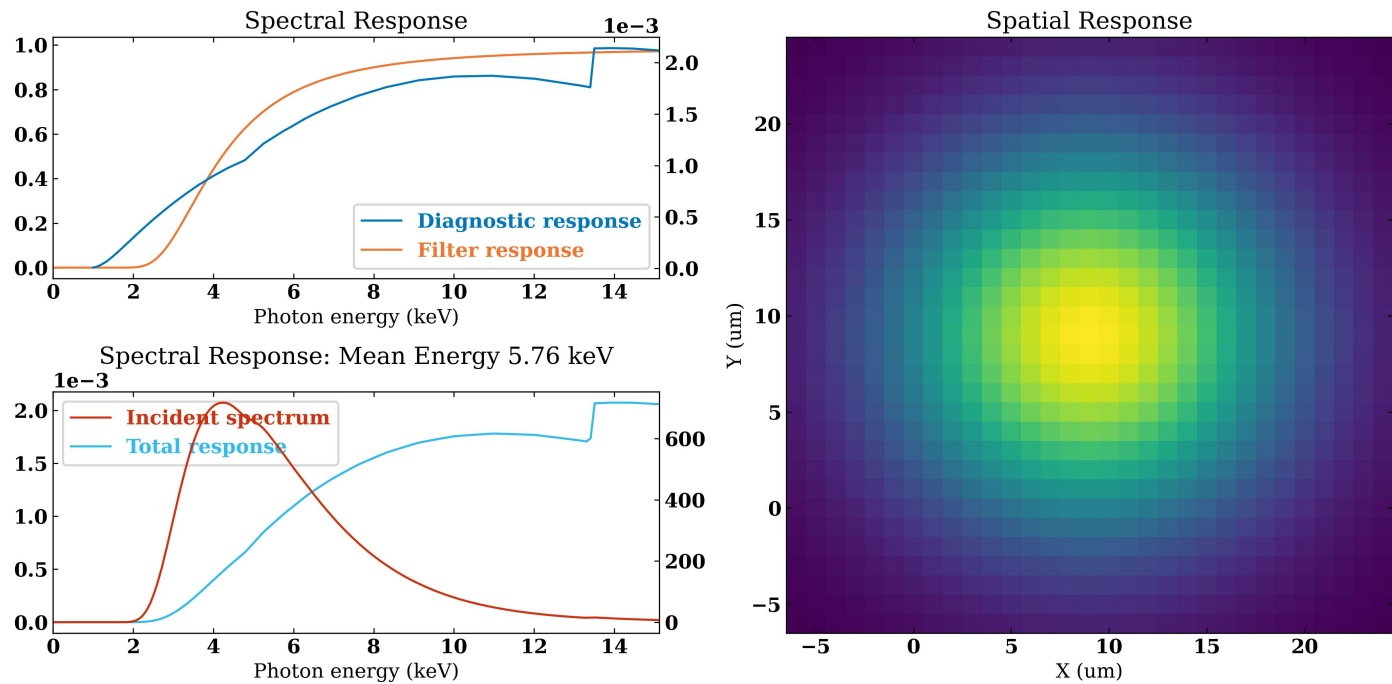
TRXI IP 1 Processing



TRXI IP 1 Pinhole Locator Report



TRXI IP 1 Response Functions



TRXI IP 1 Fresnel Diffraction

Fresnel Diffraction for $D = 5\text{ }\mu\text{m}$, $M = 10.40$, $R = 166\text{ mm}$

